

From: National Board of Forensic Evaluators, Inc. admin@nbfe.net
Subject: What's New With NBFE? (Winter 2018-2019)
Date: February 12, 2019 at 9:16 PM
To: Test Member aaroncap@gmail.com

Winter 2018-2019



What's New with NBFE?

NBFE President and Founder Celebrates 80th Birthday

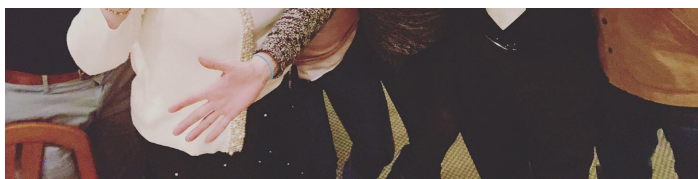


A crowd of CFMHs, friends and family celebrating Dr. Hoffman's 80th birthday

Dr. Norman Hoffman founded NBFE in 2003 because there was no national certification providing quality training and certification for forensic mental health evaluators other than psychologists, such as clinical mental health counselors, clinical social workers, and marriage and family therapists. It is because of his vision, sacrifice, and dedication that we have the opportunity to enjoy the fellowship of NBFE. True to his personality and skill, Dr. Hoffman played jazz music on his keyboard during his entire birthday celebration, and he presented a certification worship for NBFE on his birthday.

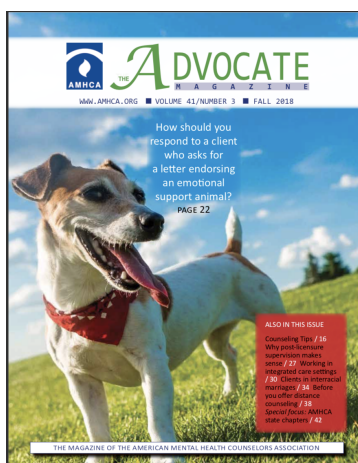
Watch a brief video clip of Dr. Hoffman playing at his celebration by [clicking here](#). Let's hope we're all as active, engaged, and accomplished at 80 as he is!





Dr. Hoffman (2nd to right) with his wife Dr. Valerie Watt (2nd to left), son (far right), daughter-in-law (middle), and NBFE personnel (far left and center) at his 80th birthday celebration

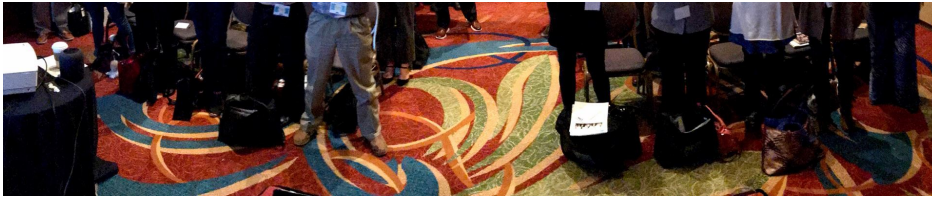
NBFE Director Publishes Article on Addressing Client Requests for Emotional Support Animal Letters as Cover Story in *The Advocate Magazine*



Members can read the article by [clicking here](#). We're hopeful that the information we've provided will help mental health professionals working in both the forensic and clinical/therapeutic arenas to catch up on this new and emerging issue. [The Advocate Magazine](#) is the official magazine of the [American Mental Health Counselors Association](#) and is an excellent resource for clinical mental health counselors. In addition to this resource, NBFE has added reference material on how to write a clinical formulation for a forensic evaluation and definitions and terms for mental status examinations to our [Member Only](#) page.

Another Successful Year for NBFE at FMHCA's Annual Conference





Packed Audience at NBFE's Training Entitled "What Clinical Mental Health Counselors Should Know About Medical Marijuana" on 2/1/19

NBFE President and Founder [Dr. Norman Hoffman](#), Executive Director [Aaron Norton](#), and Administrative Assistant Valentino Travieso provided training and outreach at the [Florida Mental Health Counselors Association's](#) annual conference in Orlando, Florida January 31st thorough February 2nd. Here are some highlights:

1. Dr. Hoffman and Mr. Norton trained a new cohort of 22 CFMHE applicants for a preconference workshop
2. NBFE personnel presented on medical marijuana as well as how to address client requests for emotional support animal letters.
3. NBFE Administrative Assistant Valentino Travieso received FMHCA's "Volunteer of the Year" award.
4. [Dwight Bain, LMHC](#), the founder of [The LifeWorks Group](#) (one of NBFE's professional partners), presented on filicide
5. [Michael Holler, LMHC](#), one of NBFE's Certified Forensic Mental Health Evaluators (CFMHE), presented on ethics and received FMHCA's "Leadership Award."
6. CFMHE applicant [John Davis, LMHC](#), President of [Mental Health Counselors Association of Palm Beach](#) (an official NBFE partnering organization), received FMHCA's "Professional Service and Leadership" Award.





To see more photos from the event, [click here!](#)

NBFE Launches New Webinar Training Programs



Two new NBFE "on demand" webinars, which allow attendees to participate at their convenience, have been added to NBFE's website. Topics include [How to Use Free Online Assessment Measures for Mental Health Evaluations](#) and [Business Practices of Forensic Mental Health Evaluation](#). NBFE has three live broadcast webinars scheduled from now through April, including [How to Conduct a Comprehensive Mental Status Examination](#) on 3/1, [Fun with Z-Codes: The Clinician's Guide to Diagnosing Non-Disorders](#) on 3/22, and [How to Write a Successful Clinical or Forensic Report](#) on 4/5. Members can attend **for free** or elect to pay a \$10 nominal fee for a CE certificate.

NBFE Announces New Partnership



NBFE is pleased to announce a new partnership with the [Mental Health Counselors Association of Palm Beach in Florida \(MHCAPB\)](#). Members of MHCAPB are now able to access the same discounts as members of NBFE's other partnering organizations. NBFE encourages clinical mental health counselors residing in the Palm Beach area of Florida to join MHCAPB.

We're currently working on partnerships with four other associations. If you are part of an organization that you think would benefit from [partnership with NBFE](#), email NBFE Marketing Chair Daniel Newman, LMHC at daniel@nbfe.net or call Executive Director Aaron Norton at (727) 403-6208.



Support NBFE By Shopping with Amazon Smile!



NBFE IS A 501(C)(3) NONPROFIT PUBLIC CHARITY



amazonsmile
You shop. Amazon gives.

When you purchase items from Amazon, Amazon will forward 0.5% of the item's cost to support NBFE in its mission to provide quality training, certification, and professional advocacy for forensic evaluators. It costs you nothing extra!

SHOP AT THIS LINK:
[HTTPS://SMILE.AMAZON.COM/CH/80-0361113](https://smile.amazon.com/ch/80-0361113)

NBFE Welcomes Newly Certified Forensic Mental Health Evaluators (CFMHES)





Welcome, new CFMHES!

[Lee Hartnett, LPC](#) of Mt. Pleasant, SC
CFMHE #000117

[Alyssa Warren, LMHC](#) of Pensacola, FL
CFMHE #000118

[Grace Marin, LMHC](#) of Winter Park, FL
CFMHE #000119

[Lara Zwilling, LMHC](#) of Gainesville, FL
CFMHE #000120

[Camille Shea, Ph.D](#) of Houston, TX
CFMHE #000121
CCCE #021

[Kimberly Soban, Ph.D, LMHC](#) of High Point, NC
CFMHE #000122

[Suzanne Messina, LPCMH](#) of Milton, DE
CFMHE #000123

[Tunjua Nathaniel, LMHC, MCAP](#) of Ft. Pierce, FL
CFMHE #000124

[Rozelle Magee, LPC](#) of Spotylvania, VA
CFMHE #000125

Boost Up Your Resume By Presenting a Webinar for NBFEE



NBFEE is calling on CFMHEs and other mental health professionals to submit a proposal for a webinar on a forensic mental health-related topic that aligns with your expertise. Remember, that presenting for a national board in your area of specialization is one excellent way to further establish yourself as an expert. To submit a proposal, [click here](#).

Become an NBFEE Supporting Member for 2019

As a public nonprofit charity with a primarily volunteer staff, NBFEE relies on its membership to continue its ongoing mission of quality training, certification, and advocacy for mental health professionals working in the forensic arena. Please consider becoming a contributing member for 2019 by [clicking here](#) and submitting a tax-deductible donation of \$60. Contributing members are [publicly recognized on our website](#) as well as receiving a thank you letter and receipt. [Bronze sponsors](#), who donate \$250, also receive our "Keep Calm, I'm a Certified Forensic Mental Health Evaluator" coffee mug!



HELP US HELP CLINICIANS

Make a tax-deductible donation to NBFE, a 501(c)(3) nonprofit public charity in 2019!



5 LEVELS OF NBFE SPONSORSHIP

NBFE was founded in 2003 due to the absence of a national board providing quality training and certification in forensic evaluation for **ALL** licensed mental health professionals, not just psychologists. NBFE operates with a primarily volunteer staff and depends on contributing members to accomplish its mission. There are 5 options for sponsorship.



CONTRIBUTING MEMBER FOR \$60

- Your name will be listed on NBFE's website as a "contributing member."
- You will receive a certificate of recognition and a receipt for your tax-deductible contribution.



BRONZE SPONSOR FOR \$250

- Your logo will be placed on NBFE's website along with a link to your website for one year
- You will be mailed a special edition 15 oz. "Keep Calm and Call a Certified Forensic Mental Health Evaluator" coffee/tea mug.
- You will receive a certificate of recognition and a receipt for your tax-deductible contribution.



SILVER SPONSOR FOR \$500

- Your logo will be placed on NBFE's website along with a link to your website for one year
- Your CFMHE renewal fee will be waived for one year
- You will be mailed a special edition 15 oz. "Keep Calm and Call a Certified Forensic Mental Health Evaluator" coffee/tea mug.
- You will receive a certificate of recognition and a receipt for your tax-deductible contribution.



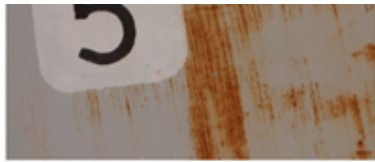
GOLD SPONSOR FOR \$1,000

- Your logo will be placed on NBFE's website along with a link to your website for one year
- CEU certificate fees for webinars and CFMHE renewal fees waived for all NBFE webinars for one full year
- You will be mailed a special edition 15 oz. "Keep Calm and Call a Certified Forensic Mental Health Evaluator" coffee/tea mug.
- You will receive a certificate of recognition and a receipt for your tax-deductible contribution.



PLATINUM SPONSOR FOR \$5,000

- CFMHE renewal fees waived **for life**
- Lifetime display of your logo and link to your website on



NBFE's website

- CEU certificate fees waived for one full year
- You will be mailed a special edition 15 oz. "Keep Calm and Call a Certified Forensic Mental Health Evaluator" coffee/tea mug.
- You will receive a certificate of recognition and a receipt for your tax-deductible contribution.

Submit your donation at <https://secure.affinipay.com/pages/national-board-of-forensic-evaluators-inc/payments> today!

Copyright © 2012 National Board of Forensic Evaluators, Inc.. All rights reserved.
Contact email: valentino@nbfe.net

You are receiving this message because you opted in at <https://nbfe.net/>

[Unsubscribe](#)